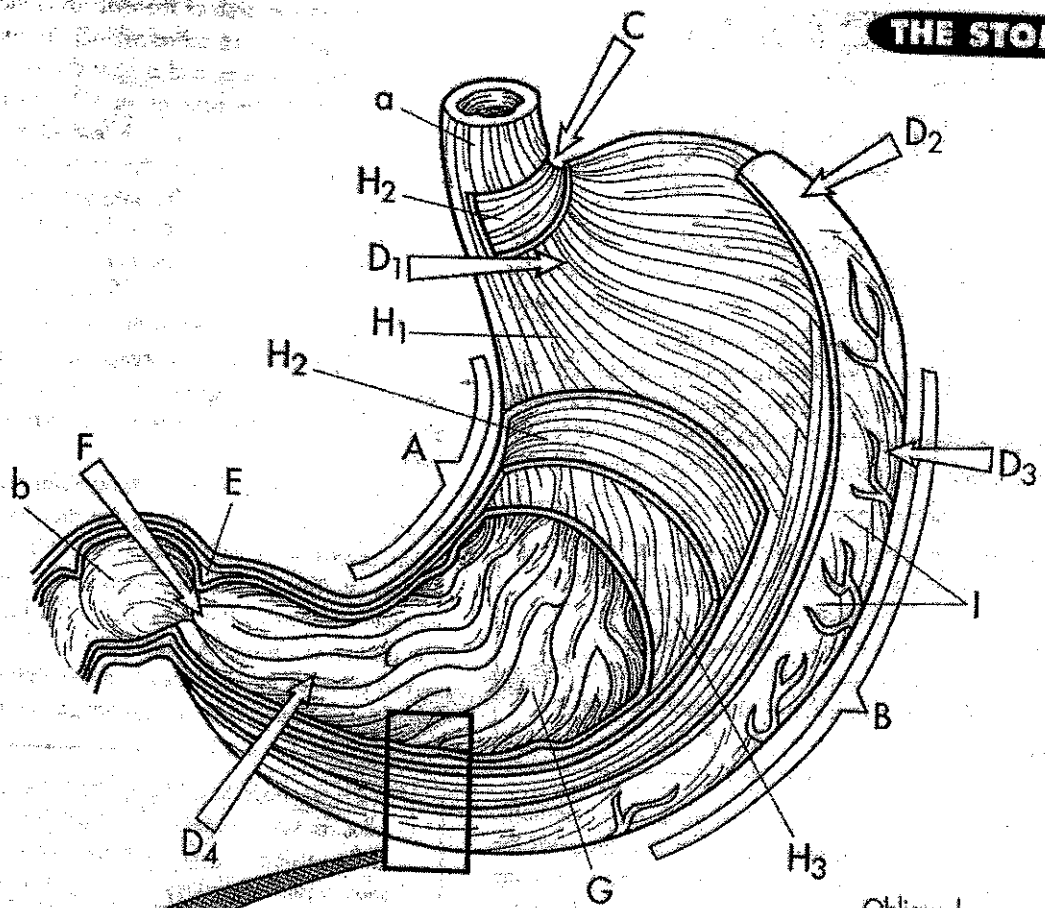
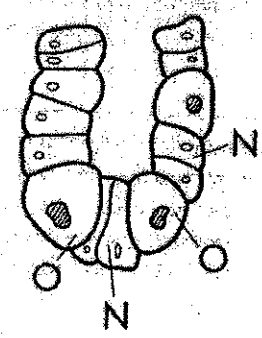
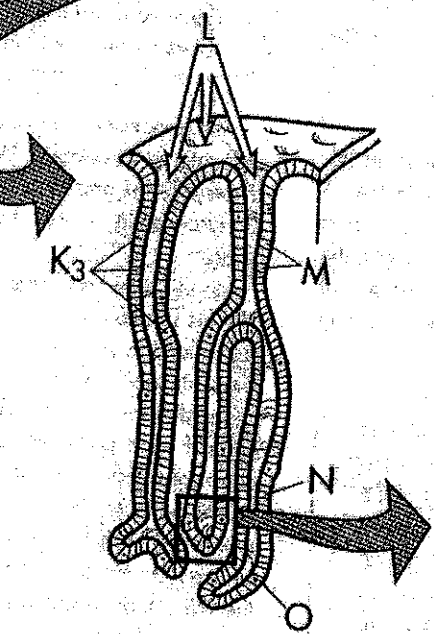
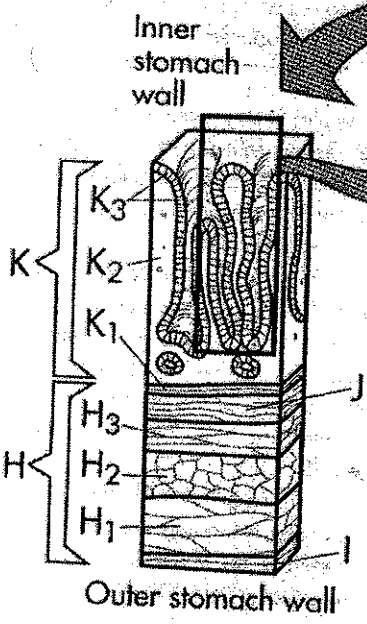


THE STOMACH



- Oblique layer H₃ ○
- Serosa I ○
- Submucosa J ○
- Mucosa K ○
- Muscularis mucosa K₁ ○
- Lamina propria K₂ ○
- Mucosal epithelium K₃ ○
- Gastric pits L ○



- Lesser curvature A ○
- Greater curvature B ○
- Cardiac sphincter C ○
- Cardia D₁ ○
- Fundus D₂ ○
- Body D₃ ○
- Pylorus D₄ ○

- Pyloric sphincter E ○
- Pyloric outlet F ○
- Rugae G ○
- Muscularis externa H ○
- Longitudinal layer H₁ ○
- Middle circular layer H₂ ○

- Neck mucous cells M ○
- Chief cells N ○
- Parietal cell ○ ○
- Esophagus a ○
- Duodenum b ○

THE SMALL INTESTINE

- Duodenum A ○
- Jejunum B ○
- Ileum C ○
- Plicae circulares D ○
- Villi E ○
- Intestinal crypts F ○
- Muscularis mucosa G ○
- Submucosa H ○
- Circular muscle I ○
- Longitudinal muscle J ○
- Serosa K ○
- Lamina propria L ○
- Epithelium M ○
- Artery N ○
- Vein O ○
- Lymph vessel P ○
- Nerve Q ○
- Capillary network R ○
- Microvilli S ○

